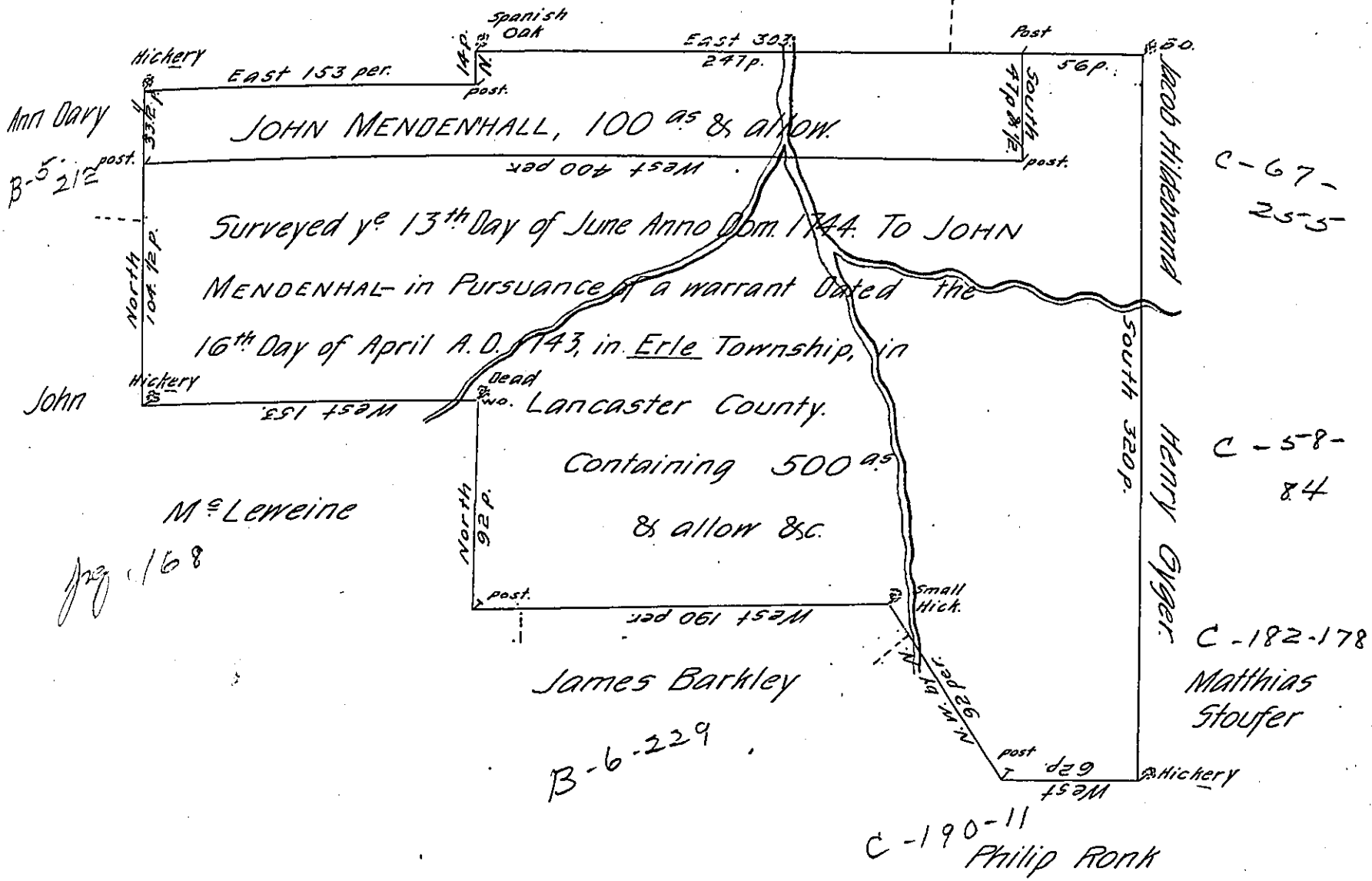


C-148-207

Thomas Owen

John Edwards



By Virtue of a Warrant Dated the 16<sup>th</sup> Day of June Ann-Domini 1744. The Smallest of the Above Described Two Tract of Land was Surveyed to John Mendenhall in Erle Township, in Lancaster County y<sup>e</sup> 13<sup>th</sup> Day of June Ann-Domini 1744. Containing One Hundred acres, Beside the Usual Allowage of Six  $\frac{1}{2}$  cent.

Sam<sup>l</sup> Lightfoot. — —

IN TESTIMONY that the above is a copy of the original remaining on file in the Department of Internal Affairs of Pennsylvania, made conformably to an Act of Assembly approved the 16th day of February, 1833, I have hereunto set my Hand and caused the Seal of said Department to be affixed at Harrisburg, this first day of November 1905.

*Isaac B. Brown*  
Secretary of Internal Affairs.